



# Exploring 4-H at Home



Sustainable Agriculture  
and Food Security

## Pillar: Sustainable Agriculture and Food Security

### Project: Beef Unit 2

### Activity: Digestive Activity Sheets



CANADA  
4-H Saskatchewan

## Beef Unit 2

Reference and Activity  
Guide

# Activity sheets from the Beef Project

## Activity: Let's Compare

Draw a line from the labels in the centre of the page to the diagrams on either side. On the right is the digestive system of the beef animal and on the left is your digestive system.

### The Human

You have a monogastric (single stomach) digestive system.

### The Beef Animal

The beef animal has a ruminant (four compartment stomach) digestive system.



- Mouth
- Esophagus
- Stomach
- Rumen
- Reticulum
- Omasum
- Abomasum
- Small intestine
- Large intestine
- Anus



A good way of learning how the digestive system of a beef animal works is to compare it with that of the human. How does your diet differ from that of your heifer or steer?

**Your Diet**

---

---

---

---

---

---

---

---

**Heifer or Steer's Diet**

---

---

---

---

---

---

---

---

Because your diet is different from that of the beef animal, it is logical that your digestive system would be very different from that of the beef animal.

**How is your stomach like the beef animal's stomach?**

---

---

---

---

---

---

---

---

**How is your stomach different from the beef animal's stomach?**

---

---

---

---

---

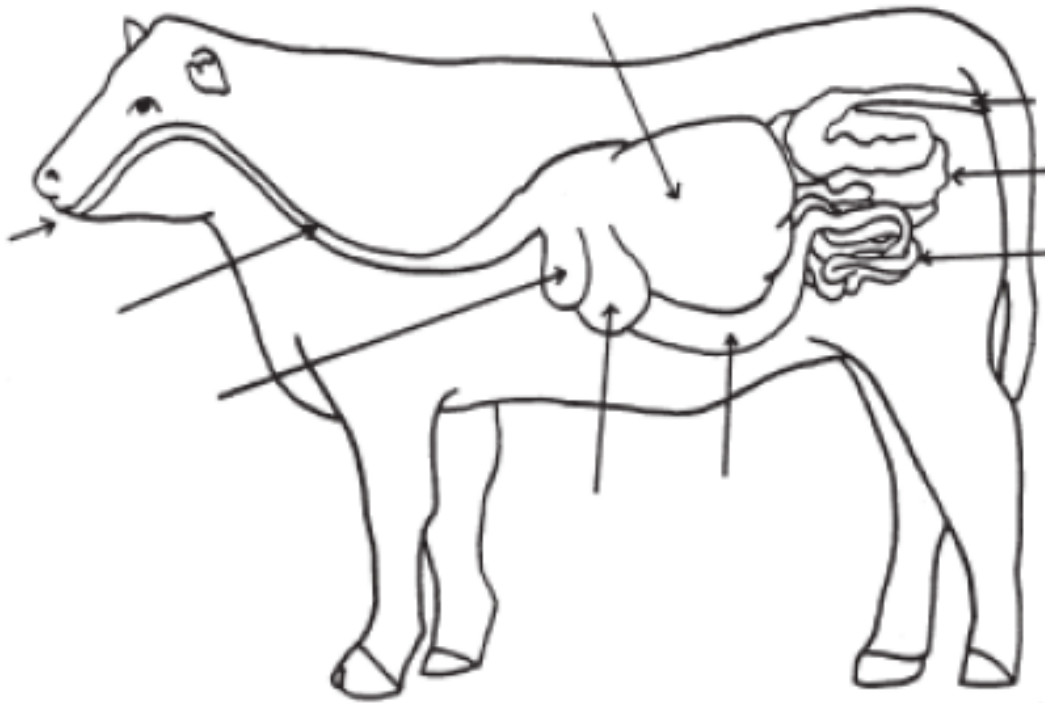
---

---

---

---

**Activity:** On the diagram below, label all of the parts of the beef digestive system.



### Activity: Keep Your Newborn Calves Healthy

In the puzzle below, find as many of these words as you can about the things you need to keep your calves healthy. Each of the words is in a straight line – horizontal, vertical diagonal, backwards or forwards.

Antibodies  
Appetite  
Clean  
Colostrum  
Dry

Energy  
Growth  
Mineral  
Mother  
Protein

Temperature  
Vitamins  
Water

T	Y	N	A	E	L	C	*
E	V	E	R	G	H	O	S
M	I	N	E	R	A	L	E
P	T	E	H	O	T	O	I
E	A	R	T	W	N	S	D
R	M	G	O	T	I	T	O
A	I	Y	M	H	E	R	B
T	N	D	R	Y	T	U	I
U	S	L	A	E	O	M	T
R	W	A	T	E	R	H	N
E	T	I	T	E	P	P	A

The remaining letters spell the word that completes this sentence:

"As a beef producer, one of your goals is to produce strong, \_\_\_\_\_ calves"